

MICREX-SX series

About the Version Up of D300win System Software

Preface

This document describes the content of the “version up” (from V2.2.0.□ to V2.2.1.□) of D300win system software, or MICREX-SX program support tool.

Please read this manual together with the following user's manuals.

MICREX-SX series User's Manual D300win <REFERENCE>: manual No. FEH254a
MICREX-SX series User's Manual About the Version Up of D300win: manual No. FEH254-1
MICREX-SX series User's Manual About the Version Up of D300win: manual No. FEH254-2

Precaution for the Version Up-grade of Your System Be sure to uninstall the old version system before you install the new version system. Otherwise, the system may not correctly be installed.

Before Using the D300win:

To ensure proper operation, be sure to read “Precautions for Using D300win” included in this manual, the User's Manual, and D300win program folder.

1. List of Newly Added Functions

From version V2.2.2.0, the following function is added:

1) Adaptation to the T-link extension function

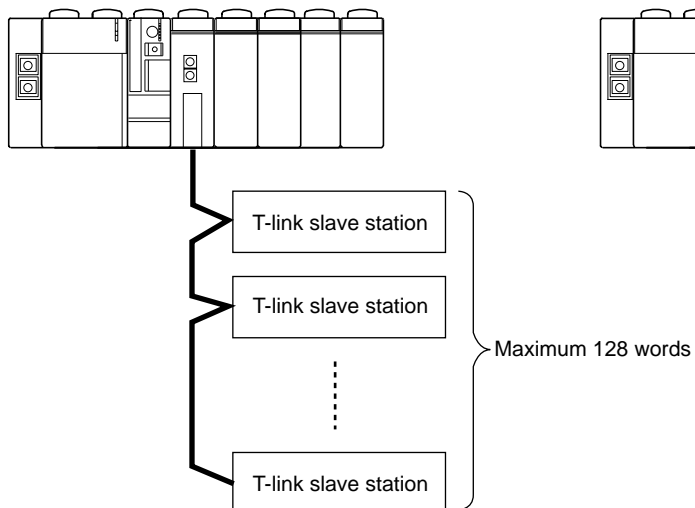
- T-link master module (T-link extension mode) added
- Checking of T-link extension function adapted CPU module and T-link master module

2. T-link Extension Function

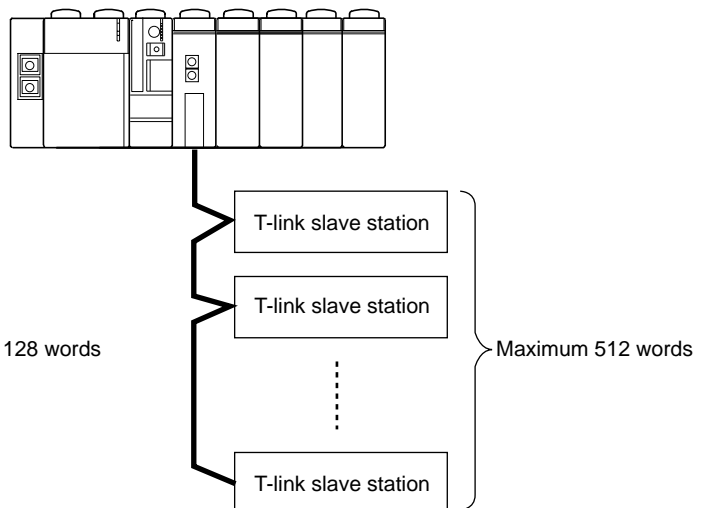
The T-link extension function extends the maximum number of input/output words of the T-link equipments that can be connected to one unit of T-link master module, from 128 words (2048 points) to 512 words (8192 points). For more information, refer to the manual for T-link master module.

<Outline of T-link extension>

<Ordinary T-link system>



<Extended T-link system>



Note:

The T-link extension function extends the input/output areas that can be allocated to one T-link system. This function, however, cannot increase the number of T-link equipments (maximum 32 units) that can be connected to one T-link system.

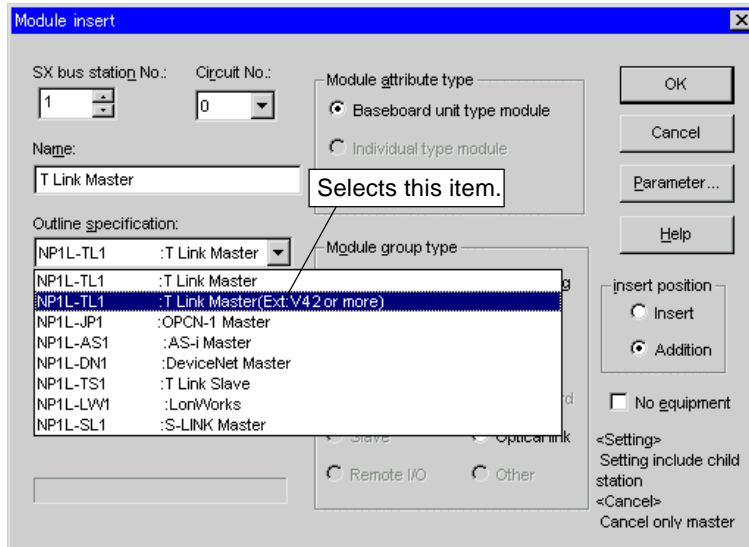
<Necessary environment to construct an extended T-link system>

To construct an extended T-link system, D300win, high-performance CPU module, and T-link master module of the following or later version are necessary:

Name	Adapted version
D300win	V2.2.2.0 or more
High-performance CPU module	Software version V56 or more
T-link master module	V2242 or more

<How to Define the System Configuration>

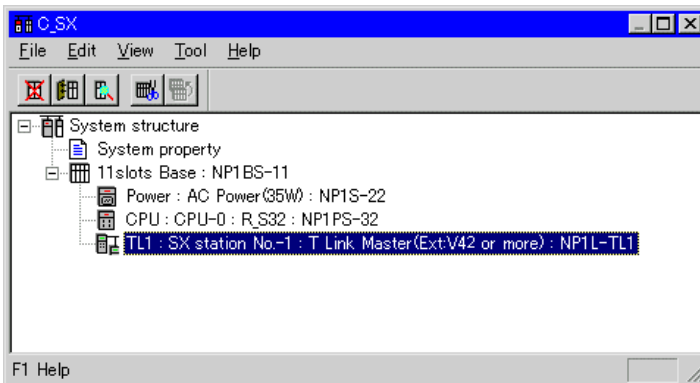
- 1) For registration of system configuration, two types of T-link master module NP1L-TL1 are prepared in the [Module insert] dialog, as shown below. To construct an extended T-link system, select "NP1L-TL1: T-link master (extension: V42 or more)", and click the [OK] button.



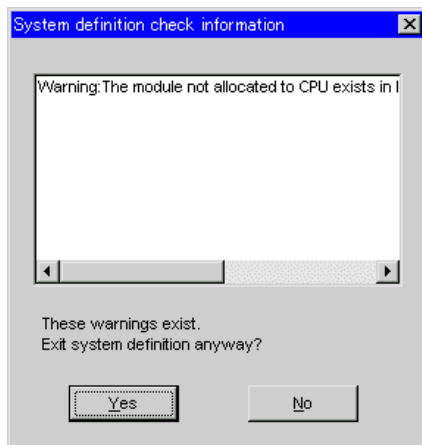
Note:

For versions older than V2.2.2.0, "NP1L-TL1: T-link master (extension: V42 or more)" is not displayed in the selection box of the dialog.

- 2) T-link master (extended T-link mode) is registered.



- 3) When you close the window after the system configuration is defined, the following warning window is displayed.



This warning window is always displayed when the T-link master module of extended T-link mode is registered. Because this is not an error at all, click the [Yes] button to complete the definition of system configuration when you want to construct an extended T-link system.