



# New AC fans for forced air ventilation

## **New AC fans for forced air ventilation in IP 66**

Our range of forced air fans is specially adapted to market requirements, complies with protection system IP 66 and joins the current fan range, which has enjoyed a market presence spanning many years.

Internal rotor motor technology in renowned ebm-papst quality forms the basis for protection system IP 66.

A special sealing system on the shaft outlet was developed to ensure that the fan will function reliably throughout its service life.

We have placed particular emphasis on the overall aerodynamic concept and applied decades of practical experience during the development of special impellers and ducted elements such as guard grilles and hoods, which has reduced noise emissions and increased air volumes significantly compared to other products on the market.

The terminal box is designed for star, delta and Steinmetz circuit types as standard. We would be more than happy to provide special solutions, such as developing different plug configurations, in close collaboration with our customers.

The cast aluminium guard grille with cast terminal box is extremely hard-wearing and specially designed for demanding ventilation applications.

The specially developed impellers made from high-strength plastic are available in the sizes AH63 to AH90 (axial impeller) and in sizes AH100 to AH200 (centrifugal diagonal impeller).

**The hoods are made from galvanised sheet, are straight bead welded and can be adapted individually to suit customer requirements.**

## Table of content



■ New AC fans for forced air ventilation	2
■ Size 120 (AH63)	4
■ Size 135 (AH71)	6
■ Size 150 (AH80)	8
■ Size 170 (AH90)	10
■ Size 185 (AH100)	12
■ Size 205 (AH112)	14
■ Size 230 (AH132)	16
■ Size 270 (AH160 / AH180 / AH200)	18
■ Electrical connections	24
■ Distributors, agencies and subsidiaries	26

# AC fans for forced air ventilation

Ø 120 (AH63)



- **Material:**  
Metal housing: electrolytically galvanised (Zincor)  
Blades: PA plastic (all-plastic impeller)  
Motor housing / guard grille: die-cast aluminium
- **Direction of air flow:** "A"
- **Direction of rotation:** Clockwise, viewed from front of impeller
- **Type of protection:** IP 66
- **Insulation class:** "F"
- **Mounting position:** Any
- **Mode of operation:** Continuous operation (S1)
- **Bearings:** Maintenance-free ball bearings

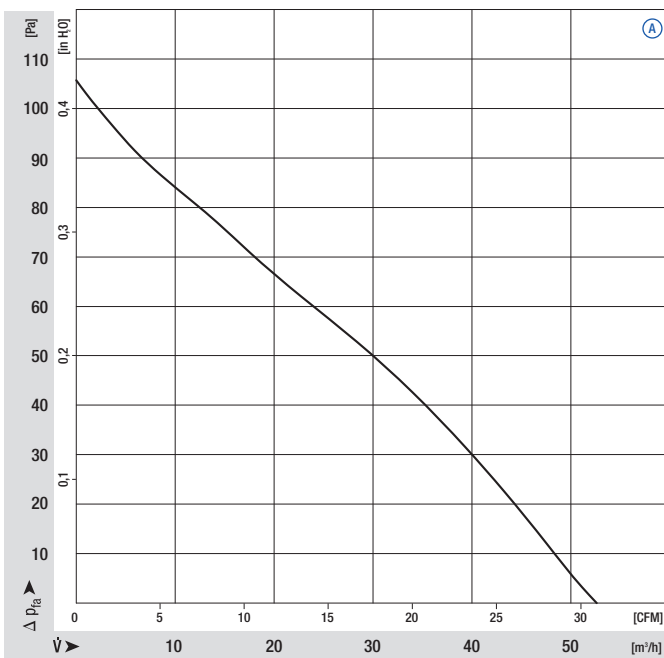
Nominal data		Curve	Nominal voltage	Nominal voltage range	Frequency	Air flow	Speed/rpm	Power input	Current draw	Capacitor	Sound pressure level	Perm. amb. temp.	Mass	
Type	Motor	VAC	VAC	Hz	m³/h	rpm	W	A	µF/VDB	dB(A)	°C	kg		
F2D 120-AA01-02	M2D 027-DA	Ⓐ	400	380-500	Y	50	52	2800	26	0.064	---	48	-25..+70	2,7
			400	380-575	Y	60	61	3300	24	0.054	---	51	-25..+70	
			230	220-290	Δ	50	52	2800	26	0.110	---	48	-25..+70	2,7
			230	220-332	Δ	60	61	3300	24	0.093	---	51	-25..+70	
			230	230-277	⊥(Δ)	50	52	2800	24	0.110	1.5/400	48	-25..+70	2,7
			230	230-277	⊥(Δ)	60	60	3270	25	0.110	1.5/400	51	-25..+70	

subject to alterations

The technical data was measured with the end plate attached and an opening width of 17.5 cm<sup>2</sup>

⊥ (Δ) = Steinmetz connection

## Curves



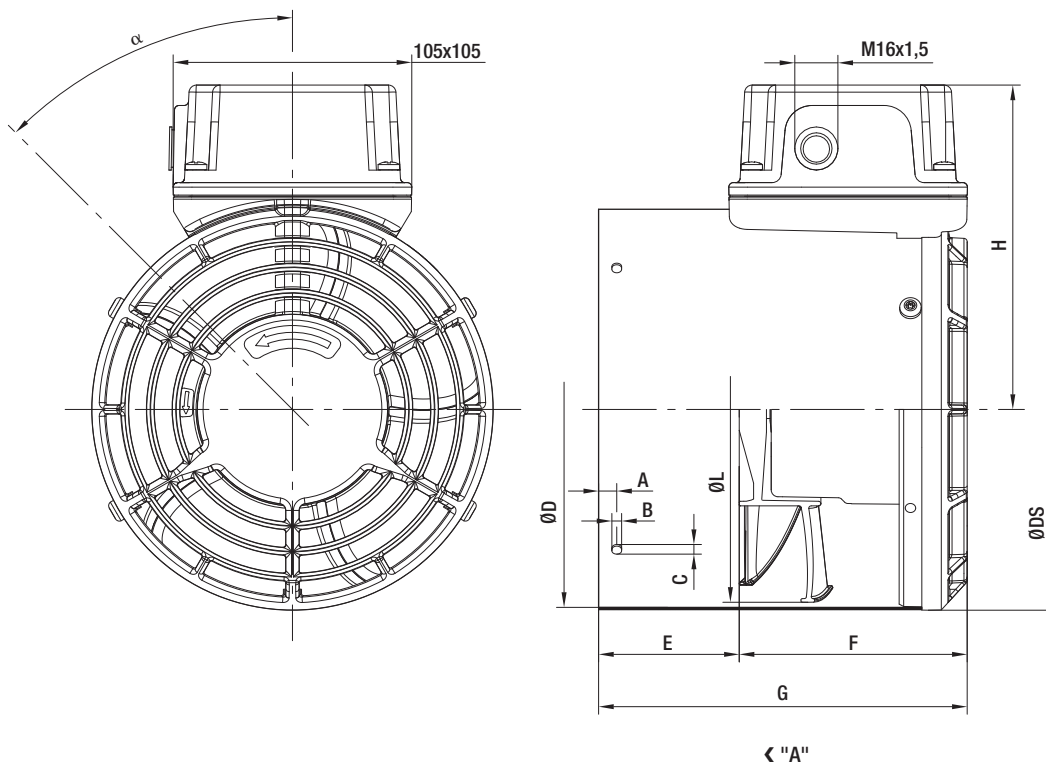
- **Motor protection:** Optional with connection for external TOP
- **Cable exit:** Via terminal box
- **Protection class:** I (as per EN 61800-5-1)
- **Product conforming to standards:** EN 60034
- **Approvals:** UL, CSA

## Dimensions

(A)	(B)	(C)	(D)	(E)	F	(G)	H	L	DS	( $\alpha$ )
-----	-----	-----	-----	-----	---	-----	---	---	----	--------------

15	5,5	7	121	50	102,5	152,5	117	118	124	45
----	-----	---	-----	----	-------	-------	-----	-----	-----	----

The dimensions in brackets can be modified by the customer.



# AC fans for forced air ventilation

Ø 135 (AH71)



- **Material:**  
Metal housing: electrolytically galvanised (Zincor)  
Blades: PA plastic (all-plastic impeller)  
Motor housing / guard grille: die-cast aluminium
- **Direction of air flow:** "A"
- **Direction of rotation:** Clockwise, viewed from front of impeller
- **Type of protection:** IP 66
- **Insulation class:** "F"
- **Mounting position:** Any
- **Mode of operation:** Continuous operation (S1)
- **Bearings:** Maintenance-free ball bearings

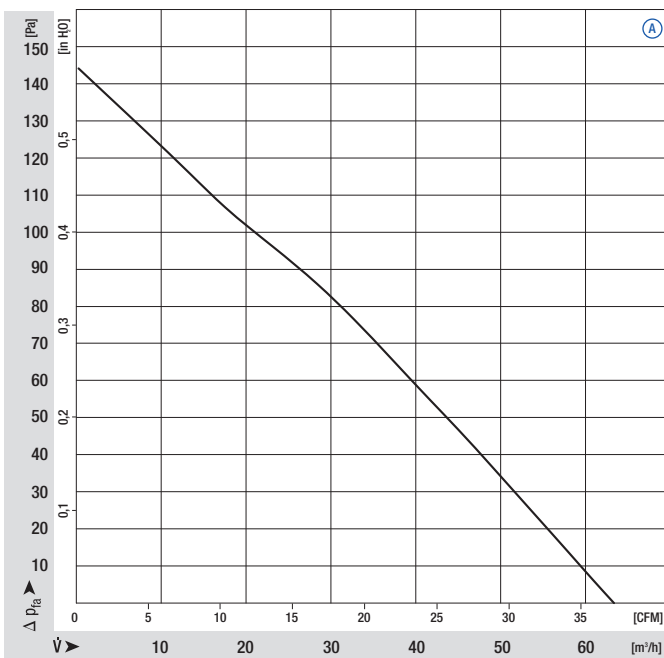
Nominal data		Curve	Nominal voltage	Nominal voltage range	Frequency	Air flow	Speed/rpm	Power input	Current draw	Capacitor	Sound pressure level	Perm. amb. temp.	Mass	
Type	Motor	VAC	VAC	Hz	m³/h	rpm	W	A	µF/VDB	dB(A)	°C	kg		
F2D 135-AA01-02	M2D 027-DA	A	400	380-500	Y	50	64	2780	27	0.064	---	50	-25..+70	2,8
			400	380-575	Y	60	73	3190	27	0.055	---	53	-25..+70	
		Δ	230	220-290	Δ	50	64	2780	27	0.110	---	50	-25..+70	2,8
			230	220-332	Δ	60	73	3190	27	0.095	---	53	-25..+70	
		⊥(Δ)	230	230-277	⊥(Δ)	50	63	2740	25	0.113	1.5/400	50	-25..+70	2,8
			230	230-277	⊥(Δ)	60	70	3080	27	0.120	1.5/400	52	-25..+70	

subject to alterations

The technical data was measured with the end plate attached and an opening width of 18.9 cm<sup>2</sup>

⊥(Δ) = Steinmetz connection

## Curves



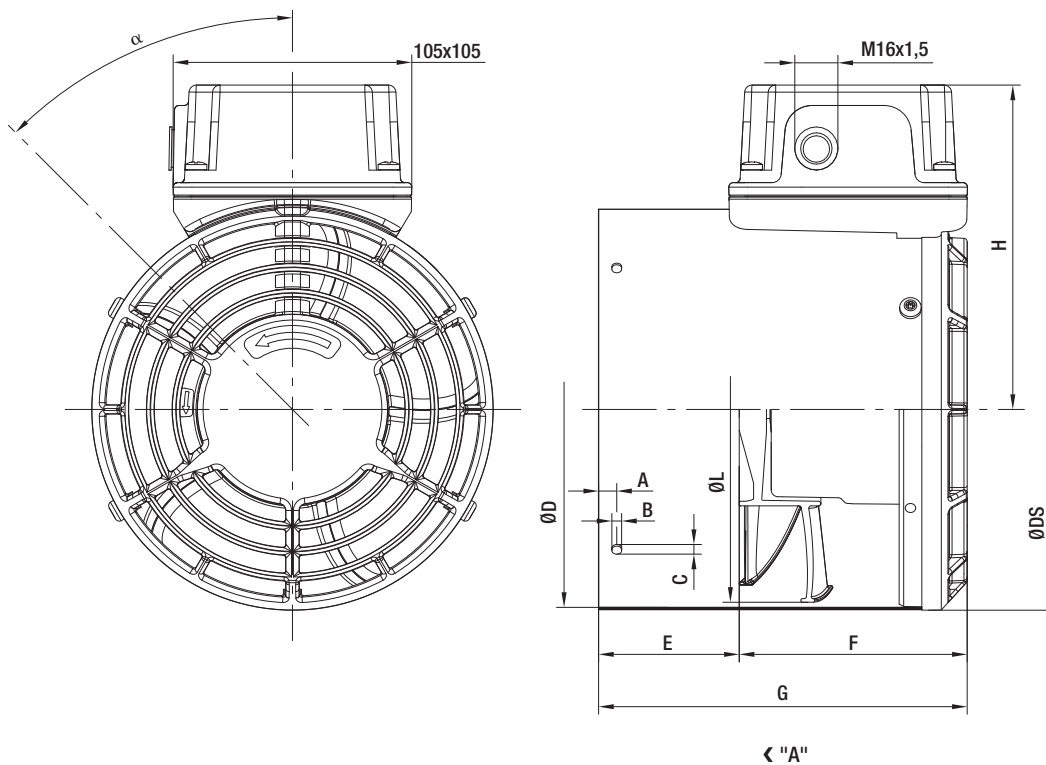
- **Motor protection:** Optional with connection for external TOP
- **Cable exit:** Via terminal box
- **Protection class:** I (as per EN 61800-5-1)
- **Product conforming to standards:** EN 60034
- **Approvals:** UL, CSA

### Dimensions

(A)	(B)	(C)	(D)	(E)	F	(G)	H	L	DS	( $\alpha$ )
-----	-----	-----	-----	-----	---	-----	---	---	----	--------------

15	5,5	7	136	50	102,5	152,5	124	132	139	45
----	-----	---	-----	----	-------	-------	-----	-----	-----	----

The dimensions in brackets can be modified by the customer.



# AC fans for forced air ventilation

Ø 150 (AH80)



- **Material:**  
Metal housing: electrolytically galvanised (Zincor)  
Blades: PA plastic (all-plastic impeller)  
Motor housing / guard grille: die-cast aluminium
- **Direction of air flow:** "A"
- **Direction of rotation:** Clockwise, viewed from front of impeller
- **Type of protection:** IP 66
- **Insulation class:** "F"
- **Mounting position:** Any
- **Mode of operation:** Continuous operation (S1)
- **Bearings:** Maintenance-free ball bearings

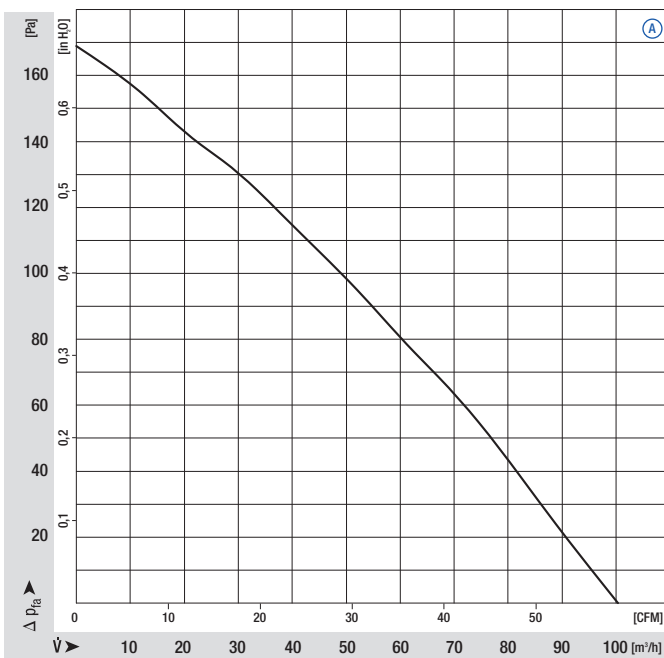
Nominal data		Curve	Nominal voltage	Nominal voltage range	Frequency	Air flow	Speed/rpm	Power input	Current draw	Capacitor	Sound pressure level	Perm. amb. temp.	Mass	
Type	Motor	VAC	VAC	Hz	m³/h	rpm	W	A	µF/VDB	dB(A)	°C	kg		
F2D 150-AA01-02	M2D 027-DA	Ⓐ	400	380-500	Y	50	100	2740	28	0.064	---	55	-25..+70	2,9
			400	380-575	Y	60	114	3125	29	0.058	---	58	-25..+70	
			230	220-290	Δ	50	100	2740	28	0.110	---	55	-25..+70	2,9
			230	220-332	Δ	60	114	3125	29	0.100	---	58	-25..+70	
			230	230-277	⊥(Δ)	50	99	2730	28	0.125	1.5/400	55	-25..+70	2,9
			230	230-277	⊥(Δ)	60	107	2930	29	0.130	1.5/400	56	-25..+70	

subject to alterations

The technical data was measured with the end plate attached and an opening width of 24.7 cm<sup>2</sup>

⊥ (Δ) = Steinmetz connection

## Curves





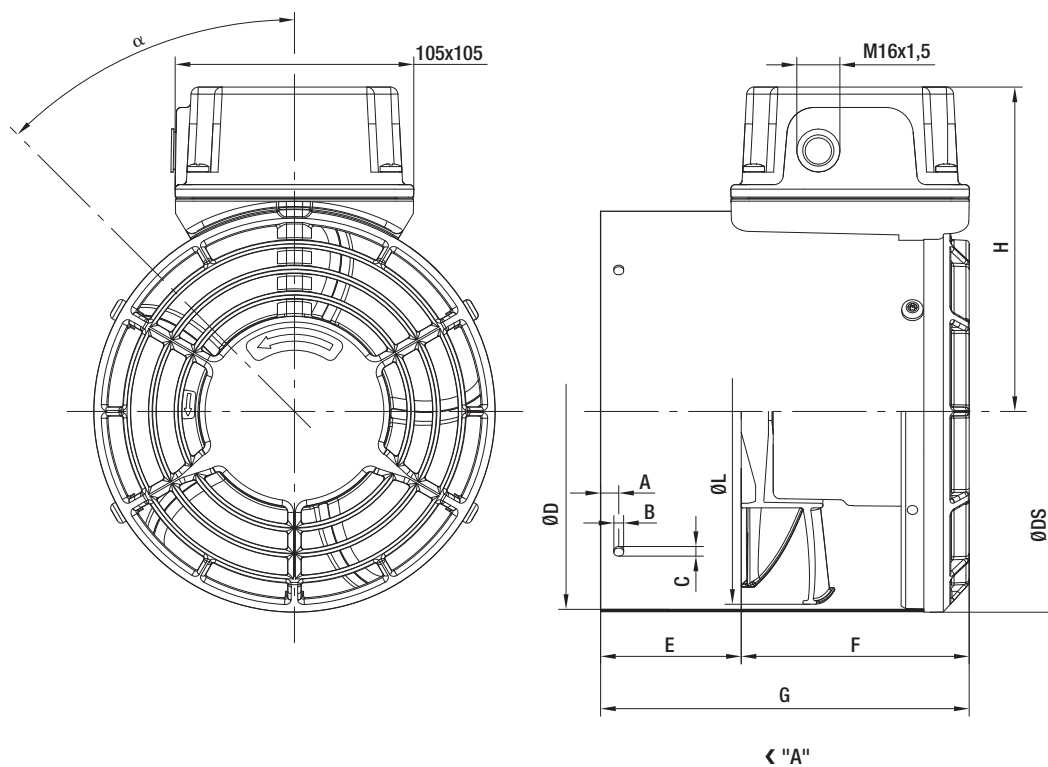
- **Motor protection:** Optional with connection for external TOP
- **Cable exit:** Via terminal box
- **Protection class:** I (as per EN 61800-5-1)
- **Product conforming to standards:** EN 60034
- **Approvals:** UL, CSA

## Dimensions

(A)	(B)	(C)	(D)	(E)	F	(G)	H	L	DS	( $\alpha$ )
-----	-----	-----	-----	-----	---	-----	---	---	----	--------------

15	5,5	7	154	50	102,5	152,5	133	150	157	45
----	-----	---	-----	----	-------	-------	-----	-----	-----	----

The dimensions in brackets can be modified by the customer.



# AC fans for forced air ventilation

Ø 170 (AH90)



- **Material:**  
Metal housing: electrolytically galvanised (Zincor)  
Blades: PA plastic (all-plastic impeller)  
Motor housing / guard grille: die-cast aluminium
- **Direction of air flow:** "A"
- **Direction of rotation:** Clockwise, viewed from front of impeller
- **Type of protection:** IP 66
- **Insulation class:** "F"
- **Mounting position:** Any
- **Mode of operation:** Continuous operation (S1)
- **Bearings:** Maintenance-free ball bearings

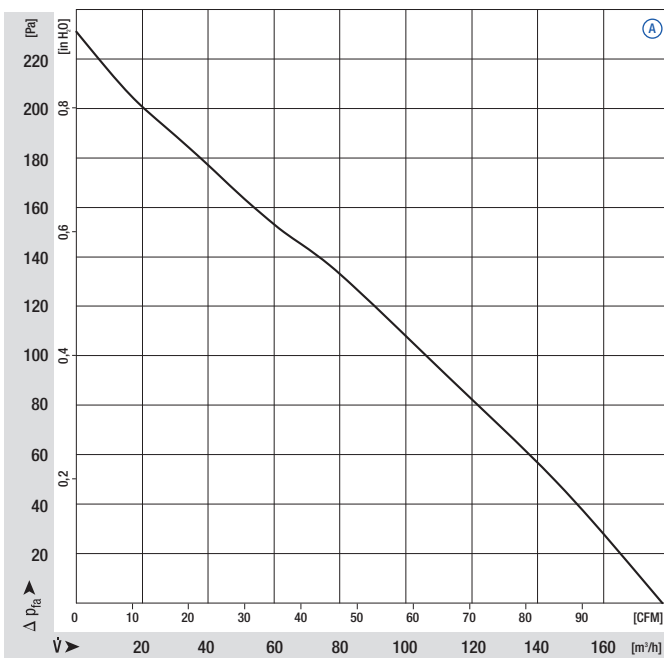
Nominal data		Curve	Nominal voltage	Nominal voltage range	Frequency	Air flow	Speed/rpm	Power input	Current draw	Capacitor	Sound pressure level	Perm. amb. temp.	Mass	
Type	Motor	VAC	VAC	Hz	m³/h	rpm	W	A	µF/VDB	dB(A)	°C	kg		
F2D 170-AA01-02	M2D 038-DA	Ⓐ	400	380-500	Y	50	175	2900	40	0.139	---	61	-25..+70	3,2
			400	380-575	Y	60	210	3440	46	0.115	---	65	-25..+70	
			230	220-290	Δ	50	175	2900	40	0.240	---	61	-25..+70	3,2
			230	220-332	Δ	60	210	3440	46	0.200	---	65	-25..+70	
			230	230-277	⊥(Δ)	50	175	2900	39	0.240	2.5/400	61	-25..+70	3,2
			230	230-277	⊥(Δ)	60	210	3440	47	0.220	2.5/400	65	-25..+70	

subject to alterations

The technical data was measured with the end plate attached and an opening width of 41.5 cm<sup>2</sup>

⊥ (Δ) = Steinmetz connection

## Curves



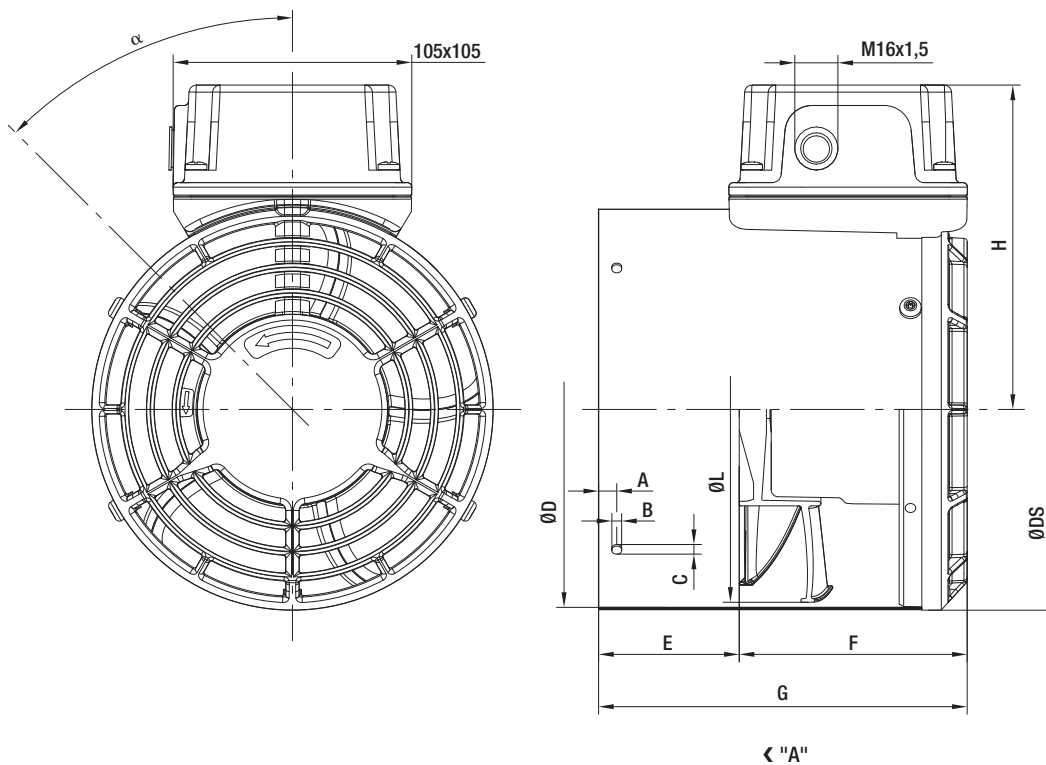
- **Motor protection:** Optional with connection for external TOP
- **Cable exit:** Via terminal box
- **Protection class:** I (as per EN 61800-5-1)
- **Product conforming to standards:** EN 60034
- **Approvals:** UL, CSA

### Dimensions

(A)	(B)	(C)	(D)	(E)	F	(G)	H	L	DS	(α)
-----	-----	-----	-----	-----	---	-----	---	---	----	-----

15	5,5	7	174	50	100,5	150,5	143	170	177	45
----	-----	---	-----	----	-------	-------	-----	-----	-----	----

The dimensions in brackets can be modified by the customer.



# AC fans for forced air ventilation

Ø 185 (AH100)



- **Material:**  
Metal housing: electrolytically galvanised (Zincor)  
Blades: PA plastic (all-plastic impeller)  
Motor housing / guard grille: die-cast aluminium
- **Direction of air flow:** "A"
- **Direction of rotation:** Clockwise, viewed from front of impeller
- **Type of protection:** IP 66
- **Insulation class:** "F"
- **Mounting position:** Any
- **Mode of operation:** Continuous operation (S1)
- **Bearings:** Maintenance-free ball bearings

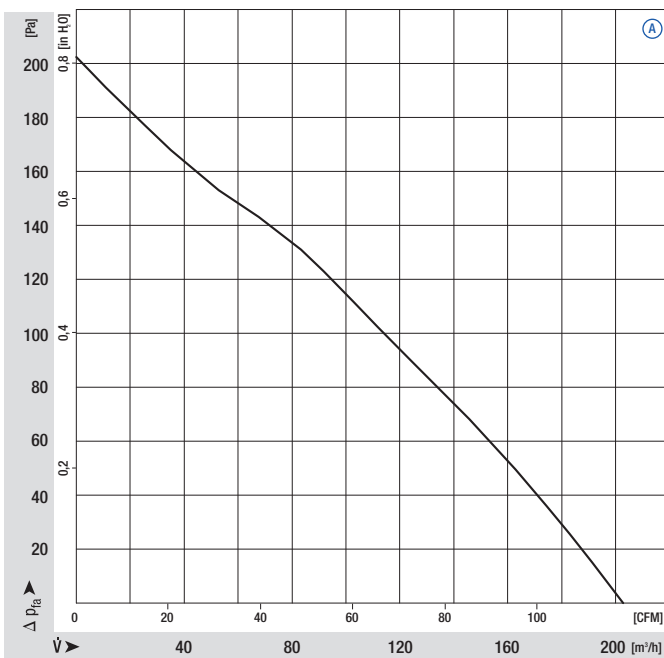
Nominal data		Curve	Nominal voltage	Nominal voltage range	Frequency	Air flow	Speed/rpm	Power input	Current draw	Capacitor	Sound pressure level	Perm. amb. temp.	Mass	
Type	Motor	VAC	VAC	Hz	m <sup>3</sup> /h	rpm	W	A	µF/VDB	dB(A)	°C	kg		
F2D 185-AA01-02	M2D 038-DA	Ⓐ	400	380-500	Y	50	210	2880	50	0.144	---	62	-25..+70	3,5
			400	380-575	Y	60	245	3330	65	0.133	---	66	-25..+70	
			230	220-290	Δ	50	210	2880	50	0.250	---	62	-25..+70	3,5
			230	220-332	Δ	60	245	3330	65	0.230	---	66	-25..+70	
			230	230-277	⊥(Δ)	50	210	2870	48	0.240	2.5/400	62	-25..+70	3,5
			230	230-277	⊥(Δ)	60	245	3300	67	0.300	2.5/400	66	-25..+70	

subject to alterations

The technical data was measured with the end plate attached and an opening width of 44.8 cm<sup>2</sup>

⊥ (Δ) = Steinmetz connection

## Curves

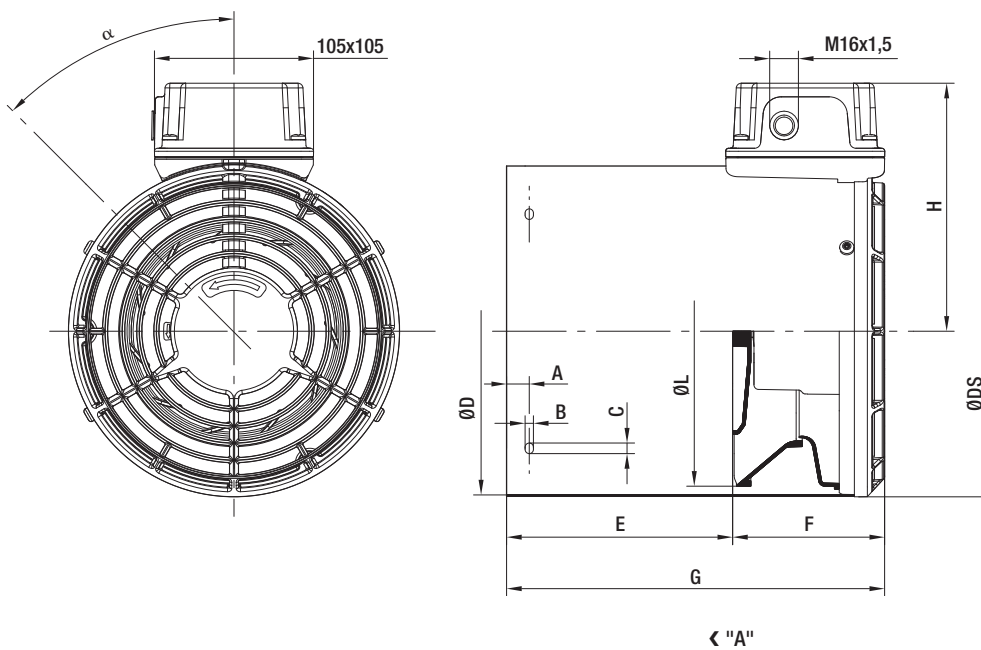


- **Motor protection:** Optional with connection for external TOP
- **Cable exit:** Via terminal box
- **Protection class:** I (as per EN 61800-5-1)
- **Product conforming to standards:** EN 60034
- **Approvals:** UL, CSA

### Dimensions

(A)	(B)	(C)	(D)	(E)	F	(G)	H	L	DS	( $\alpha$ )
15	5,5	7	192	50	100,5	150,5	152	184	195	45

The dimensions in brackets can be modified by the customer.



# AC fans for forced air ventilation

Ø 205 (AH112)



- **Material:**  
Metal housing: electrolytically galvanised (Zincor)  
Blades: PA plastic (all-plastic impeller)  
Motor housing / guard grille: die-cast aluminium
- **Direction of air flow:** "A"
- **Direction of rotation:** Clockwise, viewed from front of impeller
- **Type of protection:** IP 66
- **Insulation class:** "F"
- **Mounting position:** Any
- **Mode of operation:** Continuous operation (S1)
- **Bearings:** Maintenance-free ball bearings

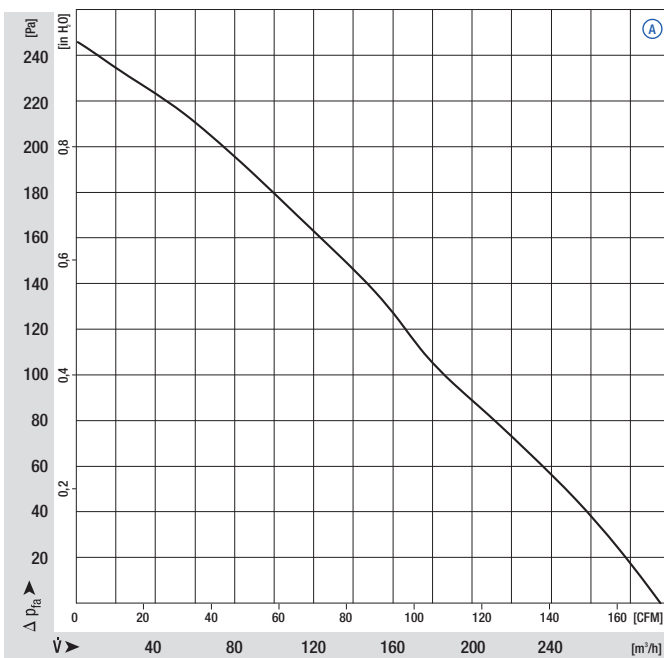
Nominal data		Curve	Nominal voltage	Nominal voltage range	Frequency	Air flow	Speed/rpm	Power input	Current draw	Capacitor	Sound pressure level	Perm. amb. temp.	Mass	
Type	Motor	VAC	VAC	Hz	m³/h	rpm	W	A	µF/VDB	dB(A)	°C	kg		
F2D 205-AA01-02	M2D 038-DA	Ⓐ	400	380-500	Y	50	295	2830	58	0.150	---	63	-25..+70	3,8
			400	380-575	Y	60	340	3250	76	0.144	---	66	-25..+70	
			230	220-290	Δ	50	295	2830	58	0.260	---	63	-25..+70	3,8
			230	220-332	Δ	60	340	3250	76	0.250	---	66	-25..+70	
			230	230-277	⊥(Δ)	50	295	2820	56	0.270	3.0/400	63	-25..+70	3,8
			230	230-277	⊥(Δ)	60	325	3150	79	0.360	3.0/400	65	-25..+70	

subject to alterations

The technical data was measured with the end plate attached and an opening width of 61.6 cm<sup>2</sup>

⊥ (Δ) = Steinmetz connection

## Curves

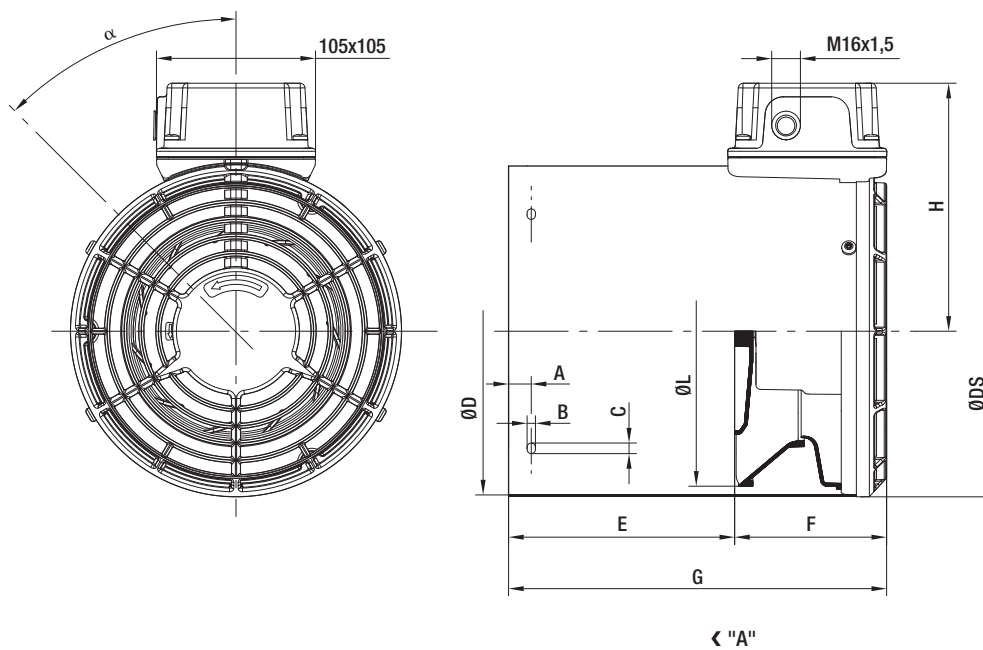


- **Motor protection:** Optional with connection for external TOP
- **Cable exit:** Via terminal box
- **Protection class:** I (as per EN 61800-5-1)
- **Product conforming to standards:** EN 60034
- **Approvals:** UL, CSA

### Dimensions

(A)	(B)	(C)	(D)	(E)	F	(G)	H	L	DS	(α)
15	5,5	7	216	50	100,5	150,5	164	204	219	45

The dimensions in brackets can be modified by the customer.



# AC fans for forced air ventilation

Ø 230 (AH132)



- **Material:**  
Metal housing: electrolytically galvanised (Zincor)  
Blades: PA plastic (all-plastic impeller)  
Motor housing / guard grille: die-cast aluminium
- **Direction of air flow:** "A"
- **Direction of rotation:** Clockwise, viewed from front of impeller
- **Type of protection:** IP 66
- **Insulation class:** "F"
- **Mounting position:** Any
- **Mode of operation:** Continuous operation (S1)
- **Bearings:** Maintenance-free ball bearings

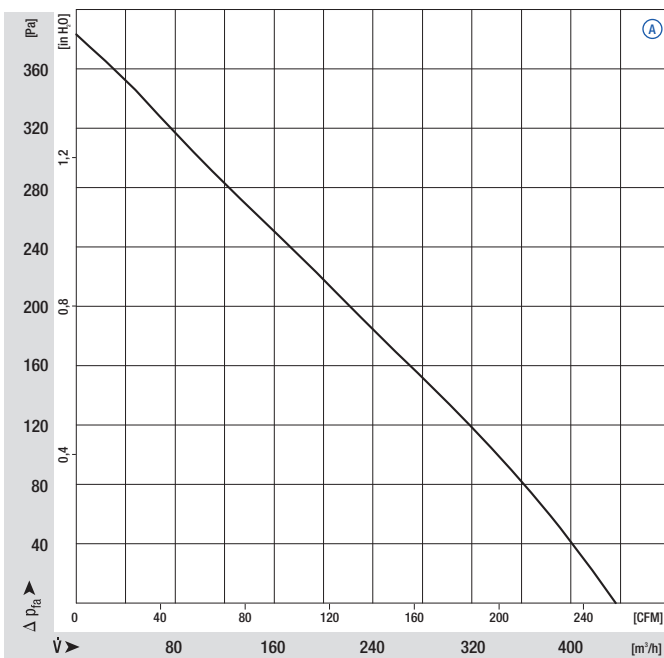
Nominal data		Curve	Nominal voltage	Nominal voltage range	Frequency	Air flow	Speed/rpm	Power input	Current draw	Capacitor	Sound pressure level	Perm. amb. temp.	Mass	
Type	Motor	VAC	VAC	Hz	m³/h	rpm	W	A	µF/VDB	dB(A)	°C	kg		
F2D 230-AA01-02	M2D 047-DA	Ⓐ	400	380-500	Y	50	440	2730	92	0.173	---	65	-25..+70	4,5
			400	380-575	Y	60	485	2990	138	0.225	---	67	-25..+70	
			230	220-290	Δ	50	440	2730	92	0.300	---	65	-25..+70	4,5
			230	220-332	Δ	60	485	2990	138	0.390	---	67	-25..+70	
			230	230-277	⊥(Δ)	50	420	2625	97	0.450	5.0/400	64	-25..+70	4,5
			230	230-277	⊥(Δ)	60	435	2700	150	0.630	5.0/400	65	-25..+70	

subject to alterations

The technical data was measured with the end plate attached and an opening width of 75 cm<sup>2</sup>

⊥ (Δ) = Steinmetz connection

## Curves



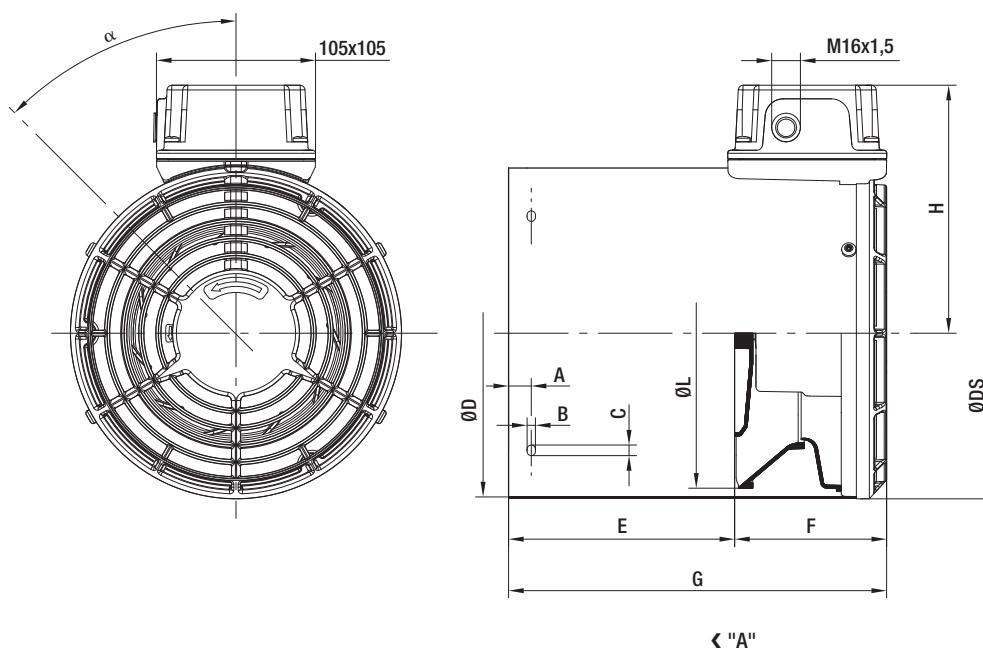


- **Motor protection:** Optional with connection for external TOP
- **Cable exit:** Via terminal box
- **Protection class:** I (as per EN 61800-5-1)
- **Product conforming to standards:** EN 60034
- **Approvals:** UL, CSA

### Dimensions

(A)	(B)	(C)	(D)	(E)	F	(G)	H	L	DS	( $\alpha$ )
15	5,5	7	255	50	110	160	184	230	258	45

The dimensions in brackets can be modified by the customer.



# AC fans for forced air ventilation

Ø 270 (AH160)



- **Material:**  
Metal housing: electrolytically galvanised (Zincor)  
Blades: PA plastic (all-plastic impeller)  
Motor housing / guard grille: die-cast aluminium
- **Direction of air flow:** "A"
- **Direction of rotation:** Clockwise, viewed from front of impeller
- **Type of protection:** IP 66
- **Insulation class:** "F"
- **Mounting position:** Any
- **Mode of operation:** Continuous operation (S1)
- **Bearings:** Maintenance-free ball bearings

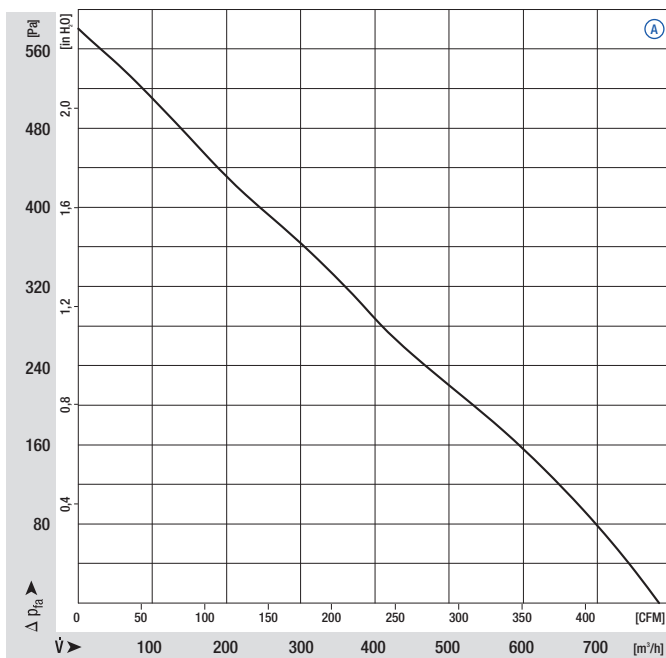
Nominal data		Curve	Nominal voltage	Nominal voltage range	Frequency	Air flow	Speed/rpm	Power input	Current draw	Capacitor	Sound pressure level	Perm. amb. temp.	Mass
Type	Motor	VAC	VAC	Hz	m³/h	rpm	W	A	µF/VDB	dB(A)	°C	kg	
F2D 270-AA01-02	M2D 047-GA	Ⓐ	400	380-500 Y	50	780	2730	205	0.350	---	70	-25..+70	5,5
			400	380-575 Y	60	860	2970	320	0.510	---	73	-25..+70	
			230	220-290 Δ	50	780	2730	205	0.606	---	70	-25..+70	5,5
			230	220-332 Δ	60	860	2970	320	0.883	---	73	-25..+70	
		230	220-270 ⊥(Δ)	50	755	2650	220	0.970	10.0/400	70	-25..+70	5,5	

subject to alterations

The technical data was measured with the end plate attached and an opening width of 106.8 cm<sup>2</sup>

⊥ (Δ) = Steinmetz connection

## Curves

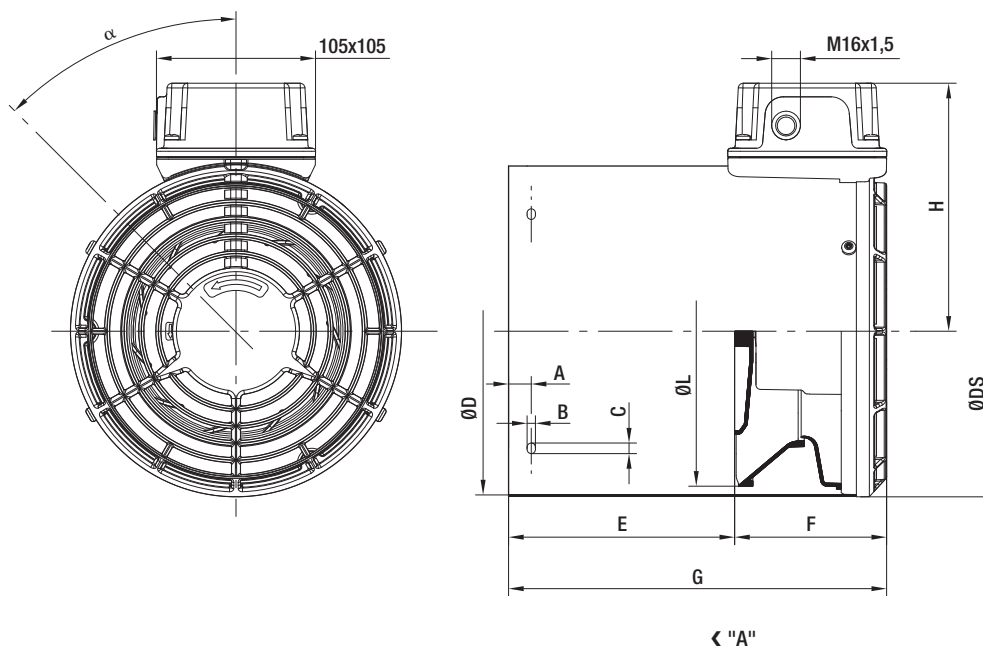


- **Motor protection:** Optional with connection for external TOP
- **Cable exit:** Via terminal box
- **Protection class:** I (as per EN 61800-5-1)
- **Product conforming to standards:** EN 60034
- **Approvals:** UL, CSA

### Dimensions

(A)	(B)	(C)	(D)	(E)	F	(G)	H	L	DS	(α)
15	5,5	7	307	50	138	188	211	270	310	45

The dimensions in brackets can be modified by the customer.



# AC fans for forced air ventilation

Ø 270 (AH180)



- **Material:**  
Metal housing: electrolytically galvanised (Zincor)  
Blades: PA plastic (all-plastic impeller)  
Motor housing / guard grille: die-cast aluminium
- **Direction of air flow:** "A"
- **Direction of rotation:** Clockwise, viewed from front of impeller
- **Type of protection:** IP 66
- **Insulation class:** "F"
- **Mounting position:** Any
- **Mode of operation:** Continuous operation (S1)
- **Bearings:** Maintenance-free ball bearings

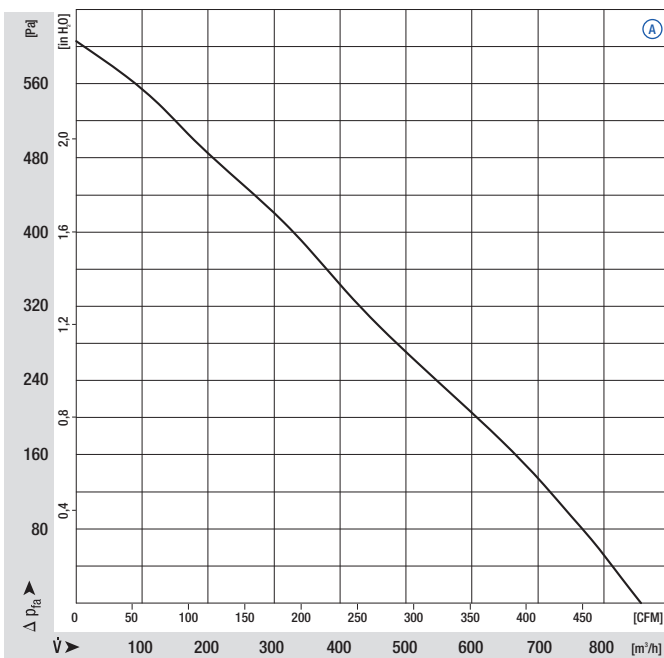
Nominal data		Curve	Nominal voltage	Nominal voltage range	Frequency	Air flow	Speed/rpm	Power input	Current draw	Capacitor	Sound pressure level	Perm. amb. temp.	Mass	
Type	Motor	VAC	VAC	Hz	m³/h	rpm	W	A	µF/VDB	dB(A)	°C	kg		
F2D 270-AA01-03	M2D 047-GA	Ⓐ	400	380-500	Y	50	855	2750	207	0.355	---	71	-25..+70	5,5
			400	380-575	Y	60	935	2980	318	0.510	---	73	-25..+70	
			230	220-290	Δ	50	855	2750	207	0.615	---	71	-25..+70	5,5
			230	220-332	Δ	60	935	2980	318	0.883	---	73	-25..+70	
		230	220-270	⊥(Δ)	50	820	2650	220	0.970	10.0/400	70	-25..+70	5,5	

subject to alterations

The technical data was measured with the end plate attached and an opening width of 118.2 cm<sup>2</sup>

⊥ (Δ) = Steinmetz connection

## Curves

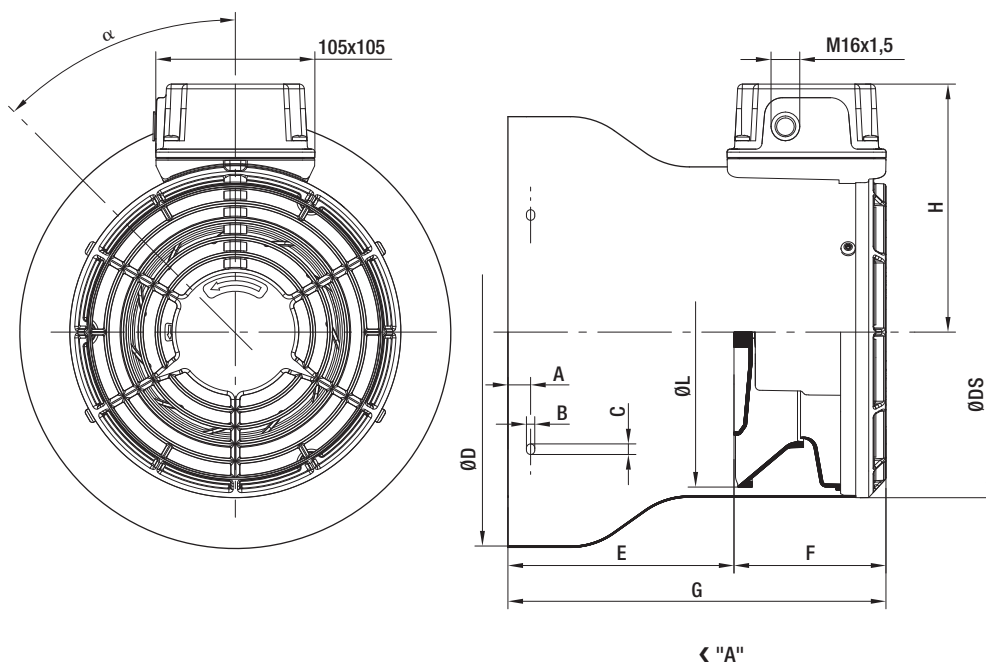


- **Motor protection:** Optional with connection for external TOP
- **Cable exit:** Via terminal box
- **Protection class:** I (as per EN 61800-5-1)
- **Product conforming to standards:** EN 60034
- **Approvals:** UL, CSA

### Dimensions

(A)	(B)	(C)	(D)	(E)	F	(G)	H	L	DS	(α)
15	5,5	7	346	200	138	338	211	270	310	45

The dimensions in brackets can be modified by the customer.



# AC fans for forced air ventilation

Ø 270 (AH200)



- **Material:**  
Metal housing: electrolytically galvanised (Zincor)  
Blades: PA plastic (all-plastic impeller)  
Motor housing / guard grille: die-cast aluminium
- **Direction of air flow:** "A"
- **Direction of rotation:** Clockwise, viewed from front of impeller
- **Type of protection:** IP 66
- **Insulation class:** "F"
- **Mounting position:** Any
- **Mode of operation:** Continuous operation (S1)
- **Bearings:** Maintenance-free ball bearings

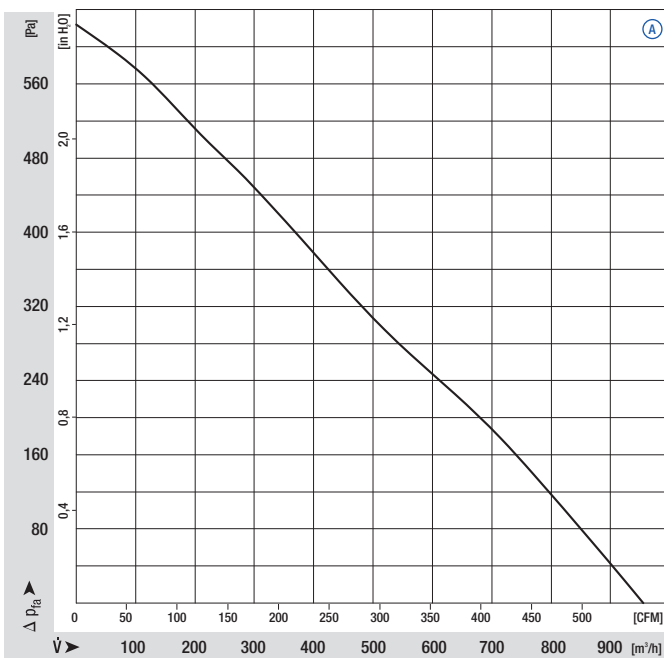
Nominal data		Curve	Nominal voltage	Nominal voltage range	Frequency	Air flow	Speed/rpm	Power input	Current draw	Capacitor	Sound pressure level	Perm. amb. temp.	Mass	
Type	Motor	VAC	VAC	Hz	m³/h	rpm	W	A	µF/VDB	dB(A)	°C	kg		
F2D 270-AA01-04	M2D 047-GA	Ⓐ	400	380-500	Y	50	955	2750	210	0.360	---	71	-25..+70	5,5
			400	380-575	Y	60	1045	2980	323	0.520	---	73	-25..+70	5,5
			230	220-290	Δ	50	955	2750	210	0.624	---	71	-25..+70	5,5
			230	220-332	Δ	60	1045	2980	323	0.901	---	73	-25..+70	5,5
		230	220-270	⊥(Δ)	50	920	2650	220	0.970	10.0/400	70	-25..+70	5,5	

subject to alterations

The technical data was measured with the end plate attached and an opening width of 136.8 cm<sup>2</sup>

⊥ (Δ) = Steinmetz connection

## Curves

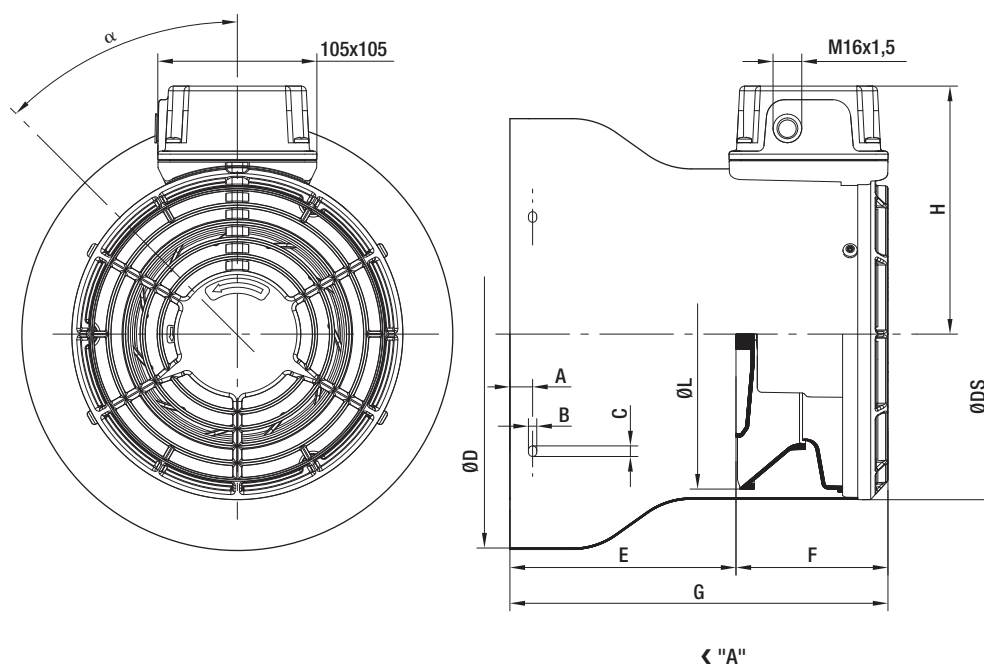


- **Motor protection:** Optional with connection for external TOP
- **Cable exit:** Via terminal box
- **Protection class:** I (as per EN 61800-5-1)
- **Product conforming to standards:** EN 60034
- **Approvals:** UL, CSA

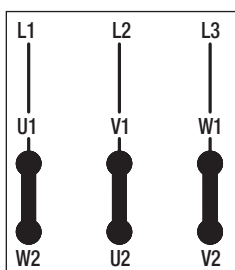
## Dimensions

(A)	(B)	(C)	(D)	(E)	F	(G)	H	L	DS	( $\alpha$ )
15	5,5	7	384	200	138	338	211	270	310	45

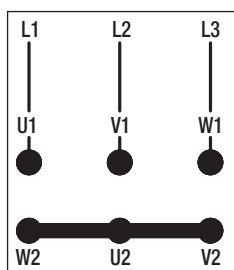
The dimensions in brackets can be modified by the customer.



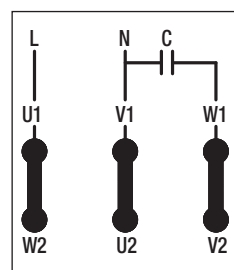
Delta connection  $\Delta$   
(3~ 230 VAC power line)



Star connection Y  
(3~ 400 VAC power line)







Steinmetz connection  $\perp(\Delta)$   
(1~ 230 VAC power line)







-  fan agent
-  compact fan agent
-  motor specialist
-  motor agent

# Distributors, agencies and subsidiaries

## Germany

### ebm-papst Muldingen GmbH & Co. KG

Bachmühle 2  
D-74673 Muldingen  
Phone +49 (0) 79 38 / 81-0  
Fax +49 (0) 79 38 / 81-110  
info1@de.ebmpapst.com

www.ebmpapst.com

### ebm-papst St. Georgen GmbH & Co. KG

Hermann-Papst-Straße 1  
D-78112 St. Georgen  
Phone +49 (0) 77 24 / 81-0  
Fax +49 (0) 77 24 / 81-13 09  
info2@de.ebmpapst.com













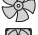





www.ebmpapst.com





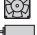













### ebm-papst Landshut GmbH

Hofmark-Aich-Straße 25  
D-84030 Landshut  
Phone +49 (0) 8 71 / 707-0  
Fax +49 (0) 8 71 / 707-465  
info3@de.ebmpapst.com

www.ebmpapst.com

## Agencies

-  **Berlin**  
 Dipl.-Ing. (TH) Jens Duchow  
 Händelstraße 7  
D-16341 Panketal  
Phone +49 (0) 30 / 94 41 49 62  
Fax +49 (0) 30 / 94 41 49 63  
Jens.Duchow@de.ebmpapst.com
-  **Dortmund**  
 Dipl.-Ing. (FH) Hans-Joachim Pundt  
 Auf den Steinern 3  
D-59519 Möhnese-Völlinghausen  
Phone +49 (0) 29 25 / 80 04 07  
Fax +49 (0) 29 25 / 80 04 08  
Hans-Joachim.Pundt@de.ebmpapst.com
-  **Frankfurt**  
 Dipl.-Ing. Christian Kleffmann  
 Dr. Hermann-Krause Straße 23  
D-63452 Hanau  
Phone +49 (0) 61 81 / 18 98 12  
Fax +49 (0) 61 81 / 18 98 13  
Christian.Kleffmann@de.ebmpapst.com
-  **Halle**  
 Dipl.-Ing. (TU) Michael Hanning  
 Lerchenweg 4  
D-06120 Lieskau  
Phone +49 (0) 3 45 / 5 51 24 56  
Fax +49 (0) 3 45 / 5 51 24 57  
Michael.Hanning@de.ebmpapst.com
-  **Hamburg**  
 Ingenieurbüro Breuell GmbH  
 Dirk Kahl  
Elektroingenieur  
Grützmühlenweg 40  
D-22339 Hamburg  
Phone +49 (0) 40 / 53 80 92 10  
Fax +49 (0) 40 / 53 80 92 84  
Dirk.Kahl@de.ebmpapst.com
-  **Kassel**  
 Dipl.-Ing. (FH) Ralph Brück  
 Hoherainstraße 38  
D-35075 Gladenbach  
Phone +49 (0) 64 62 / 40 71 10  
Fax +49 (0) 64 62 / 40 71 11  
Ralph.Brueck@de.ebmpapst.com

-  **Koblenz**  
 Winfried Schaefer  
 Hinter der Kirch 10  
D-56767 Uersfeld  
Phone +49 (0) 26 57 / 16 96  
Fax +49 (0) 26 57 / 16 76  
Winfried.Schaefer@de.ebmpapst.com
-  **Munich**  
 Dipl.-Wirt.-Ing. (FH) Jens Peter  
 Steinbergweg 6  
D-82285 Hattenhofen  
Phone +49 (0) 81 45 / 80 92 25  
Fax +49 (0) 81 45 / 80 92 26  
Jens.Peter@de.ebmpapst.com
-  **Nuremberg**  
 Friedrich Klein  
 Adlerstraße 49/1  
D-73540 Heubach  
Phone +49 (0) 71 73 / 49 83  
Fax +49 (0) 71 73 / 80 53  
Friedrich.Klein@de.ebmpapst.com
-  **Offenburg**  
 Dipl.-Ing (FH) Ralf Braun  
 Hubeneck 21  
D-77704 Oberkirch  
Phone +49 (0) 78 02 / 98 22 52  
Fax +49 (0) 78 02 / 98 22 53  
Ralf.Braun@de.ebmpapst.com
-  **Stuttgart**  
 Dipl.-Ing. (FH) Rudi Weinmann  
 Mühlhaldenweg 13  
D-73207 Plochingen  
Phone +49 (0) 71 53 / 92 89 80  
Fax +49 (0) 71 53 / 92 89 81  
Rudi.Weinmann@de.ebmpapst.com
-  **Ulm**  
 Günter Wilhelm  
 Allgäuer Straße 7  
D-89269 Vöhringen  
Phone +49 (0) 73 06 / 92 46 08  
Fax +49 (0) 73 06 / 92 46 48  
Guentel.Wilhelm@de.ebmpapst.com

## Distributors

-  **Frankfurt**  
R.E.D. Handelsgesellschaft mbH  
Gutenbergstraße 3  
D-63110 Rodgau - Jügesheim  
Phone +49 (0) 61 06 / 84 10  
Fax +49 (0) 61 06 / 84 11 11  
info@red-elektromechanik.de  
www.red-elektromechanik.de
-  **Hamburg**  
Breuell + Hilgenfeldt GmbH  
Grützmühlenweg 40  
D-22339 Hamburg  
Phone +49 (0) 40 / 53 80 92 20  
Fax +49 (0) 40 / 53 80 92 84  
info@breuell.de
-  **Munich**  
A. Schweiger GmbH  
Ohmstraße 1  
D-82054 Sauerlach  
Phone +49 (0) 81 04 / 8 97 0  
Fax +49 (0) 81 04 / 8 97 90  
info@schweiger-gmbh.de  
www.schweiger-gmbh.com
- **Express Service-Center** (1 to 5 pieces)
-  **North**  
 Breuell + Hilgenfeldt GmbH  
 Grützmühlenweg 40  
D-22339 Hamburg  
Phone +49 (0) 40 / 53 80 92 20  
Fax +49 (0) 40 / 53 80 92 84  
ebm@breuell.de
-  **South**  
 HDS Ventilatoren Vertriebs GmbH  
Glaswiesenstraße 1  
D-74677 Dörzbach  
Phone +49 (0) 79 37 / 80 29 68  
Fax +49 (0) 79 37 / 80 25 78  
info@hds-gmbh.net

## Europe



### Austria

ebm-papst Motoren & Ventilatoren GmbH  
Westbahnstraße 5  
A-4490 St. Florian  
Phone +43 / 72 24 / 66 01 10  
Fax +43 / 72 24 / 66 01 120  
info@at.ebmpapst.com  
www.ebmpapst.at



### Belarus

ebm-papst Bel AgmbH  
Prospekt Nesavisimosti 11/2 Zimmer 325, 512  
BY-220050 Minsk  
Phone +375 / 17 / 209 95 61  
Fax +375 / 17 / 209 95 61  
info@by.ebmpapst.com



### Belgium

VIBO Benelux B. V.  
Sales office Belgium-Luxemburg  
Romeinsestraat 6/0101  
Research Park Haasrode  
B-3001 Heverlee-Leuven  
Phone +32 / 16 / 39 62 00  
Fax +32 / 16 / 39 62 20  
info@vibobenelux.com  
www.vibobenelux.com



### Bulgaria

ebm-papst Romania S.R.L.  
Str. Tirnavei Nr. 20  
RO-500327 Brasov  
Phone +40 / 268 / 312 805  
Fax +40 / 268 / 312 805  
dudasludovic@xnet.ro



### Croatia

ebm-papst Industries Kft.  
Mátyás u. 1/A  
H-2220 Vecsés  
Phone +36 / 29 / 55 01 90  
Fax +36 / 29 / 55 01 94  
office@hu.ebmpapst.com  
www.ebmpapst.hu



### Cyprus

MATERO LTD  
37, St. Kyriakides Avenue  
P.O. Box 51744  
CY-3080 Limassol  
Phone +357 / 25 / 87 00 30  
Fax +357 / 25 / 38 13 66  
matero@cytanet.com.cy  
www.matero.com.cy



### Czech Republic / Slovakia

ebm-papst CZ s.r.o.  
Krátká 379  
CZ-66461 Rajhradice u Brna  
Phone +420 / 5 / 47 23 26 16  
Fax +420 / 5 / 47 23 26 22  
info@ebmpapst.cz  
www.ebmpapst.cz



### Denmark

Jenk A/S  
Vallensbækvej 21  
DK-2605 Brøndby  
Phone +45 / 43 / 63 11 11  
Fax +45 / 43 / 63 05 05  
jenk@jenk.dk  
www.jenk.dk



### Estonia

ebm-papst Oy Eesti Filiaal  
Kadaka tee 3  
EST-10621 Tallinn  
Phone +372 / 65 56 / 978  
Fax +372 / 65 56 / 979  
www.ebmpapst.ee



### Finland

ebm-papst Oy  
Puistotie 1  
FIN-02760 Espoo  
Phone +358 / 9 / 88 70 22 0  
Fax +358 / 9 / 88 70 22 13  
mailbox@ebmpapst.fi  
www.ebmpapst.fi



### France

ebm-papst SARL  
ZI Nord - rue A. Mohler  
BP 62  
F-67212 Obernai-Cedex  
Phone +33 / 820 326 266  
Fax +33 / 3 / 88 67 38 83  
info@ebmpapst.fr  
www.ebmpapst.fr



### Greece

Helcoma  
Th. Rotas & Co OE  
Davaki 65  
GR-17672 Kallithea-Attiki  
Phone +30 / 210 / 951 37 05  
Fax +30 / 210 / 951 34 90  
contact@helcoma.gr  
www.helcoma.gr



### Hungary

ebm-papst Industries Kft.  
Mátyás u. 1/A  
H-2220 Vecsés  
Phone +36 / 29 / 55 01 90  
Fax +36 / 29 / 55 01 94  
office@hu.ebmpapst.com  
www.ebmpapst.hu



### Iceland

RJ Engineers  
Stangarhyl 1A  
IS-110 Reykjavik  
Phone +354 / 567 80 30  
Fax +354 / 567 80 15  
rj@rj.is  
www.rj.is



### Ireland

ebm-papst Limited  
Portlaoise Business & Technology Park  
Mountrath Road  
IRL-Portlaoise, Co. Laois  
Phone +353 / 57 86 / 643 43  
Fax +353 / 57 86 / 643 46  
sales@ie.ebmpapst.com  
www.ebmpapst.ie







### Italy

ebm-papst Srl  
Via Cornaggia 108  
I-22076 Mozzate (Co)  
Phone +39 / 03 31 / 83 62 01  
Fax +39 / 03 31 / 82 15 10  
info@it.ebmpapst.com  
www.ebmpapst.it






### Macedonia

ebm-papst Industries Kft.  
Mátyás u. 1/A  
H-2220 Vecsés  
Phone +36 / 29 / 55 01 90  
Fax +36 / 29 / 55 01 94  
office@hu.ebmpapst.com  
www.ebmpapst.hu

-  fan agent
-  compact fan agent
-  motor specialist
-  motor agent

# Distributors, agencies and subsidiaries




 **Netherlands**  
 VIBO Benelux B. V.  
 Engelseweg 127  
 Postbus 230  
 NL-5705 AC Helmond  
 Phone +31 / 4 92 / 50 29 00  
 Fax +31 / 4 92 / 50 29 50  
[verkoop@vibobenelux.com](mailto:verkoop@vibobenelux.com)  
[www.vibobenelux.com](http://www.vibobenelux.com)

 **Norway**  
 ebm-papst AS  
 P.B. 173 Holmlia  
 N-1203 Oslo  
 Phone +47 / 22 / 76 33 40  
 Fax +47 / 22 / 61 91 73  
[mailbox@ebmpapst.no](mailto:mailbox@ebmpapst.no)  
[www.ebmpapst.no](http://www.ebmpapst.no)




 **Poland**  
 ebm-papst Polska Sp. z o.o.  
 ul. Annopol 4A  
 PL-03236 Warszawa  
 Phone +48 / 22 / 675 78 19  
 Fax +48 / 22 / 676 95 87  
[office@ebmpapst.pl](mailto:office@ebmpapst.pl)  
[www.ebmpapst.pl](http://www.ebmpapst.pl)

 **Portugal**  
 ebm-papst (Portugal), Lda.  
 Av. Marechal Gomes da Costa, 35 e  
 Rua Conselheiro Emidio Navarro  
 P-1800-255 Lisboa  
 Phone +351 / 21 / 839 48 80  
 Fax +351 / 21 / 839 47 59  
[info@pt.ebmpapst.com](mailto:info@pt.ebmpapst.com)

 **Romania**  
 ebm-papst Romania S.R.L.  
 Str. Tirnavei Nr. 20  
 RO-500327 Brasov  
 Phone +40 / 268 / 312 805  
 Fax +40 / 268 / 312 805  
[dudasludovic@xnet.ro](mailto:dudasludovic@xnet.ro)

 **Russia**  
 ebm-papst Ural GmbH  
 Rosa Luxemburg Strasse 59  
 RU-620026 Jekaterinburg  
 Phone +7 / 343 / 378 31 75  
 Fax +7 / 343 / 378 31 89  
[Konstantin.Molokov@ru.ebmpapst.com](mailto:Konstantin.Molokov@ru.ebmpapst.com)  
[www.ebmpapst.ur.ru](http://www.ebmpapst.ur.ru)

 ebm-papst Rus GmbH  
 Nizhegorodskaya 32, str. 15 office 420  
 RU-109029 Moskau  
 Phone +7 / 495 / 671 53 93  
 Fax +7 / 495 / 671 53 95  
[info@ebmpapst.ru](mailto:info@ebmpapst.ru)  
[www.ebmpapst.ru](http://www.ebmpapst.ru)

 ebm-papst Rus  
 Saint-Petersburg's Filial  
 Zastavskaya 7  
 RU-196084 Sankt-Petersburg  
 Phone +7 / 812 / 449 96 07  
 Fax +7 / 812 / 449 96 07  
[spb@ru.ebmpapst.com](mailto:spb@ru.ebmpapst.com)

 **Serbia & Montenegro**  
 ebm-papst Industries Kft.  
 Mátyás u. 1/A  
 H-2220 Vecsés  
 Phone +36 / 29 / 55 01 90  
 Fax +36 / 29 / 55 01 94  
[office@hu.ebmpapst.com](mailto:office@hu.ebmpapst.com)  
[www.ebmpapst.hu](http://www.ebmpapst.hu)

 **Spain**  
 ebm-papst Ibérica S.L.  
 Avda. del Sistema Solar, 29  
 E-28830 San Fernando de Henares (Madrid)  
 Phone +34 / 91 / 678 08 94  
 Fax +34 / 91 / 678 15 30  
[ventas@ebmpapst.es](mailto:ventas@ebmpapst.es)

 **Sweden**  
 ebm-papst AB  
 Äggelundavägen 2  
 S-17562 Järfälla  
 Phone +46 / 8 / 761 94 00  
 Fax +46 / 8 / 36 23 06  
[info@ebmpapst.se](mailto:info@ebmpapst.se)  
[www.ebmpapst.se](http://www.ebmpapst.se)

 **Switzerland**  
 ebm-papst AG  
 Rütisbergstraße 1  
 CH-8156 Oberhasli  
 Phone +41 / 44 / 732 20 70  
 Fax +41 / 44 / 732 20 77  
[verkauf@ebmpapst.ch](mailto:verkauf@ebmpapst.ch)  
[www.ebmpapst.ch](http://www.ebmpapst.ch)

 **Turkey**  
 Akantel Elektronik San. Tic. LTD. Sti.  
 Atatürk Organize Sanayi  
 Bölgesi 10007 SK. No.:6  
 TR-35620 Cigli-Izmir  
 Phone +90 / 2 32 / 32 82 090 -91  
 Fax +90 / 2 32 / 32 80 270  
[akantel@akantel.com.tr](mailto:akantel@akantel.com.tr)  
[www.akantel.com.tr](http://www.akantel.com.tr)

 **Ukraine**  
 ebm-papst Ukraine LLC  
 Lapse Boulevard, 4, Building 47  
 UA-03067 Kiev  
 Phone +38 / 044 / 206 30 91  
 Fax +38 / 044 / 206 30 91  
[mail@ebmpapst.ua](mailto:mail@ebmpapst.ua)  
[www.ebmpapst.ua](http://www.ebmpapst.ua)

 **United Kingdom**  
 ebm-papst UK Ltd.  
 Chelmsford Business Park  
 GB-Chelmsford Essex CM2 5EZ  
 Phone +44 / 12 45 / 46 85 55  
 Fax +44 / 12 45 / 46 63 36  
[sales@uk.ebmpapst.com](mailto:sales@uk.ebmpapst.com)  
[www.ebmpapst.co.uk](http://www.ebmpapst.co.uk)

 ebm-papst Automotive & Drives (UK) Ltd.  
 The Smithy  
 Fidlers Lane, East Ilsley  
 GB-Berkshire RG20 7LG  
 Phone +44 / 87 07 / 66 51 70  
 Fax +44 / 87 07 / 66 51 80  
[A&Dsales@uk.ebmpapst.com](mailto:A&Dsales@uk.ebmpapst.com)  
[www.ebmpapst-ad.com](http://www.ebmpapst-ad.com)

## America

---



### Argentina



ebm-papst de Argentina S.A.  
Hernandarias 148 Lomas del Mirador  
Pcia. de Buenos Aires (1752)  
Phone +54 / 11 46 57 61 35  
Fax +54 / 11 46 57 20 92  
ventas@ar.ebmpapst.com



### Brasil



ebm-papst Motores Ventiladores Ltda.  
Rua Francisco D'Amico, 155  
Bairro Pirajussara  
BR-06785-290 Taboão da Serra-SP  
Phone +55 / 11 / 41 38 50 90  
Fax +55 / 11 / 41 38 50 86  
vendas@br.ebmpapst.com  
www.ebmpapst.com.br



### Canada



ebm-papst Canada Inc.  
1800 Ironstone Manor, Unit 2  
CDN-Pickering, Ontario, L1W3J9  
Phone +1 / 905 / 420 / 35 33  
Fax +1 / 905 / 420 / 37 72  
sales@ca.ebmpapst.com  
www.ebmpapst.ca



### Mexico



ebm Industrial S.de R.L. de C.V.  
Paseo de Tamarindos 400-A-5<sup>to</sup> Piso  
Col. Bosques de las Lomas  
MEX-Mexico 05120, D.F.  
Phone +52 / 55 / 50 91 44 44  
Fax +52 / 55 / 50 91 44 43  
sales@mx.ebmpapst.com  
www.ebmpapst.com.mx

## USA



ebm-papst Inc.  
P.O. Box 4009  
100 Hyde Road  
USA-Farmington, CT 06034  
Phone +1 / 860 / 674 15 15  
Fax +1 / 860 / 674 85 36  
sales@us.ebmpapst.com  
www.ebmpapst.us



ebm-papst Automotive & Drives, Inc.  
3200 Greenfield, Suite 255  
USA-Dearborn, MI 48120  
Phone +1 / 313 / 406 80 80  
Fax +1 / 313 / 406 80 81  
automotive@us.ebmpapst.com  
www.ebmpapst-automotive.us

## Africa





---



### South Africa



ebm-papst South Africa (Pty) Ltd.  
P.O. Box 3124  
1119 Yacht Avenue  
ZA-2040 Honeydew  
Phone +27 / 11 / 794 34 34  
Fax +27 / 11 / 794 50 20  
info@za.ebmpapst.com  
www.ebmpapst.co.za

-  fan agent
-  compact fan agent
-  motor specialist
-  motor agent

# Distributors, agencies and subsidiaries

## Asia

 **China**  
 ebm-papst Ventilator (Shanghai) Co., Ltd.  
 No. 418, Huajing Road  
 WaiGaoQiao Free Trade Zone  
 No. 2001, Yang Gao (N) Road  
 VRC-200131 Shanghai, P.R. of China  
 Phone +86 / 21 / 50 46 01 83  
 Fax +86 / 21 / 50 46 11 19  
 sales@cn.ebmpapst.com

 **Hong Kong**  
 ebm-papst Ventilator (Shanghai) Co., Ltd.  
 Hong Kong Representative Office  
 Unit Nos. 13, 9/F, Technology Park  
 18 On Lai Street, Sha Tin, N.T.  
 HK-Hong Kong P.R. of China  
 Phone +852 / 21 45 / 86 78  
 Fax +852 / 21 45 / 76 78  
 chenghong@cn.ebmpapst.com

 **India**  
 ebm NADI International Pvt Ltd.  
 26/3, G.N.T. Road, Erukkencherry  
 IND-Chennai-600118  
 Phone +91 / 44 / 25 37 25 56  
 Fax +91 / 44 / 25 37 11 49  
 ebmnadi@md2.vsnl.net.in  
 www.ebmnadi.com

 **Indonesia**  
 ebm-papst Indonesia  
 Representative Office  
 Jalan Puri Kencana, Blok K7/3T  
 RI-Jakarta 11610  
 Phone +62 / 21 / 582 / 31 18  
 Fax +62 / 21 / 582 / 31 17  
 sonny.sanjaya@id.ebmpapst.com

 **Israel**  
 Polak Bros. Import Agencies Ltd.  
 9 Hamefalsim Street  
 IL-Kiryat Arie, Petach-Tikva 49514  
 Phone +972 / 3 / 910 03 00  
 Fax +972 / 3 / 579 66 79  
 polak@polak.co.il

 **Japan**  
 ebm-papst Industries Japan K.K.  
 12 Floor, Benex S-3 Bldg.  
 3-20-8 Shinyokohama, Kohoku-ku  
 J-222-0033 Yokohama  
 Phone +81 / 45 / 470 / 57 51  
 Fax +81 / 45 / 470 / 57 52  
 info@jp.ebmpapst.com  
 www.ebmpapst.jp

 **Korea**  
 ebm-papst Korea Co. Ltd.  
 6F, Trutech Bldg.  
 B 6-2, Digital Media City (DMC)  
 Sangam-Dong, Mapo-Gu  
 ROK-Seoul 121-270  
 Phone +82 / 2 / 36 62 / 13 24  
 Fax +82 / 2 / 36 62 / 13 26  
 info@kr.ebmpapst.com  
 www.ebmpapst.co.kr

 **Malaysia**  
 ebm-papst Malaysia  
 Representative Office  
 Block F1, 9A-4, Jalan PJU 1/42  
 Dataran Prima  
 MAL-47301 Petaling Jaya  
 Phone +60 / 3 / 78 06 54 40  
 Fax +60 / 3 / 78 06 54 41  
 john.bulder@my.ebmpapst.com

 **Singapore**  
 ebm-papst SEA Pte. Ltd.  
 23 Ubi Road 4, #05-00  
 Olympia Industrial Building  
 SGP-Singapore 408620  
 Phone +65 / 68 42 84 38  
 Fax +65 / 68 42 84 39  
 salesdept@sg.ebmpapst.com

 **Taiwan**  
 ETECO Engineering & Trading Corp.  
 10F-I, No. 92, Teh-Wei Str.  
 RC-Tsow-Inn District, Kaohsiung  
 Phone +886 / 7 / 557 42 68  
 Fax +886 / 7 / 557 27 88  
 eteco@ms22.hinet.net

 **Thailand**  
 ebm-papst Thailand Co. Ltd.  
 Representative Office  
 99/349 Chaeng Wattana Road, Laksi  
 Bangkok 10210, Thailand  
 Phone +66 / 2 / 576 / 15 24-5  
 Fax +66 / 2 / 576 / 15 42  
 salesdept@th.ebmpapst.com

 **United Arab Emirates**  
 ebm-papst Middle East FZE  
 PO Box 17755  
 Jebel Ali Free Zone / FZS1 / AP05  
 UAE-Dubai  
 Phone +971 / 4 / 886 08 26  
 Fax +971 / 4 / 886 08 27  
 info@ae.ebmpapst.com

## Australia

---



### Australia

ebm-papst Australia Pty Ltd.



2 Silverton Close



AUS-Laverton North, Victoria, 3026

Phone +61 / 3 / 83 25 64 00

Fax +61 / 3 / 83 25 64 64

[sales@ebm-papst.com.au](mailto:sales@ebm-papst.com.au)

[www.ebm-papst.com.au](http://www.ebm-papst.com.au)



### New Zealand

ebm-papst Australia Pty Ltd.



102 Henderson Valley Road



NZ-Henderson, Auckland 1230

Phone +64 / 9 / 837 18 84

Fax +64 / 9 / 837 18 99

[sales@ebm-papst.com.au](mailto:sales@ebm-papst.com.au)

[www.ebm-papst.com.au](http://www.ebm-papst.com.au)

**ebm-papst**  
**Mulfingen GmbH & Co. KG**

Bachmühle 2  
D-74673 Mulfingen  
Phone +49 (0) 79 38 / 81-0  
Fax +49 (0) 79 38 / 81-110  
info1@de.ebmpapst.com

[www.ebmpapst.com](http://www.ebmpapst.com)